

# CYLINDER HEAD FLEXIBLE DRIP RING

08/04/21

## Elevator Cylinder Head Flexible Drip Ring Kit

- Keeps pit floors dry and safe
- Simple and cost effective
- Installs in 15 minutes
- Oversized drain resists clogging
- For cylinders 5.75" to 15.5" diameter
- Made from durable, flexible, oil resistant rubber compound

Drip Ring contains leaking fluid from hydraulic elevator heads. It installs below the packing gland head assembly. An oversized, flexible, oil resistant, rubber drip ring is cut and wrapped around the hydraulic cylinder. The inner flange of the drip ring is secured with adjustable metal clamp. Kit includes full instructions, drip ring, 1/2"ID x 5/8"OD x 30"L drain tubing, drain fitting, adjustable clamp and adhesive sealant.



Cylinder head drip ring kit

## Drip Ring Kit Dimensions

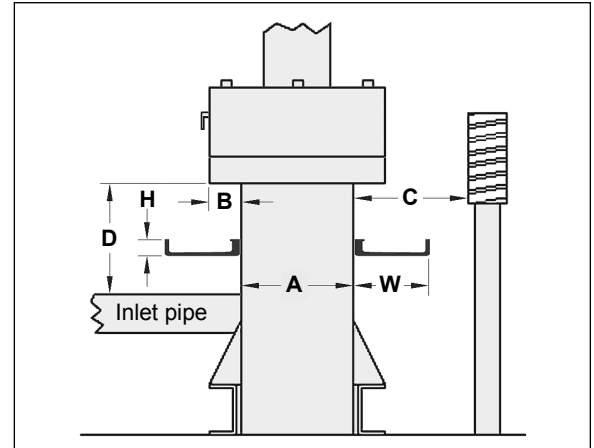
### Cylinder Diameter - Circumference Conversion Chart

Model	Diameter A	Circumference	G	H	W
CDR-1	5.75" - 7"	18.1" - 22"	1"	1"	2.63"
CDR-2	7" - 8.5"	22" - 26.7"	1"	1"	2.69"
CDR-3	8.5" - 10"	26.7" - 31.4"	1"	1"	2.88"
CDR-4	10" - 12"	31.4" - 37.7"	1"	1"	3.44"
CDR-5	12" - 14.5"	37.5" - 45.6"	1"	1"	3.69"
CDR-IVO*	3.875"	12.2"	1.25"	1.5"	1.75"

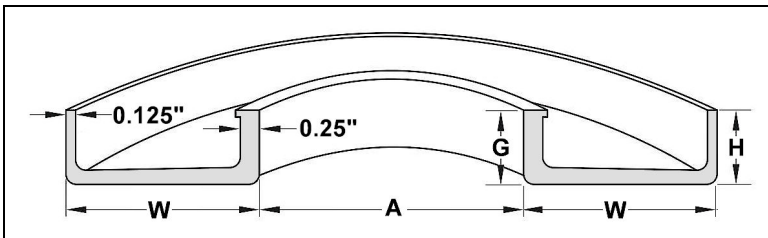
\*Designed for Dover Inverted head.

## Installation Dimensions and Clearances

Determine your cylinder sizes and clearances. Full installation instruction is provided on the next page.



Cylinder size and clearances



- A** - Diameter of the cylinder where the ring will be installed.
- B** - Overhang of the packing head from the cylinder.
- C** - Minimum side clearance is 4", or (W+0.25").
- D** - Minimum vertical clearance is 1.125", 1.625" for Dover Inverted head.
- G** - Drip ring inner wall height.
- H** - Drip ring outer wall height.
- W** - Overhang of the drip ring from the cylinder. **W** must be larger than **B**.



Drip ring installed

## Recommended Scavenger Pumps for use with Cylinder Drip Rings

Scavenger or oil return pump returns small leakage of oil from the cylinder head back to the pump unit. Internal float switch automatically turns pump on and off. External float switch, if included, shuts off pump if pit begins to fill with water. Pit flood warning alarm, semi-transparent tank container and cylinder head drip ring are available options.



Model OSC/B. 1/4 - 1/3 HP



Model SC/B-2. 1/12 HP



Model SC/B. 1/12 HP



Model SC/B-2FR. 1/12 HP



Model SC/BFR. 1/12 HP

Cylinder\_Drip\_Ring\_091321

# CYLINDER HEAD FLEXIBLE DRIP RING

## Universal Drip Ring Installation Instructions, Models CDR-1, CDR-2, CDR-3, CDR-4, CDR-5, CDR-IVO

- Read instructions thoroughly and familiarize yourself with the installation.
- Installation should only be performed by a qualified elevator mechanic.
- Use standard industry safety precautions and procedures at all times.
- Observe "**Attention**", "**Caution**" and "**Note**" instructions.

### Contents of the package:

- 1 - Drip Ring pan.
- 1 - Drain fitting.
- 1 - Clear plastic tubing, 1/2"ID x 5/8"OD x 30"L.
- 1 - Splice Plate, pre-attached.
- 1 - Hose clamp.
- 1 - Tube of RTV silicone sealant, 2.8 Oz.
- 1 - Instruction Sheet.

### Recommended Tool List:

- 6"-12" straight edge, for marking the fitting lines on the Drip Ring.
- Marking instrument, for marking on the black rubber Drip Ring.
- Utility Knife, for cutting the Drip Ring to size.
- Flat-head screwdriver or 5/16" nut socket driver, for tightening the hose clamp.

### Installation:

1. Inspect the Drip Ring and hose clamp to insure that they are the proper size range for the cylinder on which they are to be installed.
2. Locate and identify the area on the piston where the Drip Ring will be mounted.
3. The area must be near and below the packing gland with a minimum of 1-1/8" unobstructed surface and 4" free from side traveling machinery that could strike the Drip Ring.

**Note:** The Drip Ring should be installed below the packing gland head assembly and rotated so that the drain hole is adjacent to the **scavenger pump** intake.

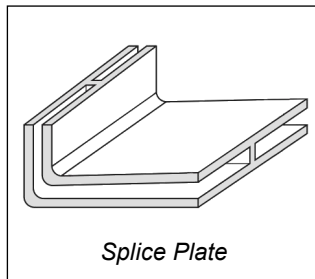
4. Clean the area where the Drip Ring will be attached and clamped. This will insure a clean leak-free installation.
5. Place the Drip Ring around the cylinder in the area of installation, below the packing gland, by pulling it apart at the open (cut) ends and bending it around the cylinder.
6. Locate the splice plate on the top side of your overlap, scribe a line along the over-lapping edge.

**Note:** Place a small amount of Hydro Oil on the utility knife blade to lubricate and aid in the cutting of the Drip Ring material.

**Caution:** Do not to cut the splice plate off as it is needed to achieve a proper tight fit.

**Attention:** Use caution and standard safety procedures when handling and using the utility knife or cutting instrument. Always cut away from your body, hands and fingers. Wear gloves during cutting for extra protection.

7. Remove the Drip Ring and cut along the marked scribed line.
8. Wipe and clean the Drip Ring in the area of the cut surfaces in preparation for the application of silicone sealant. Remove all oil so the sealant will adhere to the rubber.



9. Once cut, place the Drip Ring onto the cylinder insuring that the flange sides are up and check for proper fit. The ends should come together tightly or with a small gap of no more than 1/4".
10. Once properly fit, remove the Drip Ring and place a small amount of sealant around the inside diameter of the Drip Ring inner flange (portion of the Drip Ring that comes in contact and is clamped to the cylinder).

**Note:** Application of the sealant will not only help to seal the Drip Ring to the cylinder, it will also serve to lubricate the ring and the cylinder so that the clamp will tighten more cleanly and friction free.

11. Place the Drip Ring around the cylinder under the packing gland and position it in the area where it will be mounted and secured.
12. Place a small amount of sealant into the slot on the side of the splice plate.
13. Press the Drip Ring end into the splice plate to achieve a leak-free fit.
14. As noted above, rotate and orient the Drip Ring on the cylinder so that the hole for the drain fitting is convenient to the hydraulic oil overflow or recovery container.
15. Level the Drip Ring on the cylinder in the final mounting position.
16. Place the hose clamp around the inner flange of the Drip Ring and tighten snugly against the cylinder to achieve a tight leak-free seal.
17. Wipe and clean the excess sealant from the inner flange and splice plate.
18. Press the fitting into the hole in the inside bottom of the Drip Ring pan. The nipple portion of the drain fitting should be protruding out the bottom of the Drip Ring pan.
19. Press the clear tubing onto the nipple of the drain fitting.
20. Connect and secure the free end of the tubing to the **scavenger pump** intake. See previous page.
21. The installation is complete.
22. The Drip Ring should be inspected and cleaned regularly for optimum performance and safety.

### FOR QUESTIONS OR SUPPORT PLEASE CONTACT:

Advancing Technologies, LLC  
2425 Mainsail Ct. Fairfield, CA 94534  
Fax: (707) 429 - 3895  
Phone: (707) 694-7652

**QUALITY  
ELEVATOR PRODUCTS, INC.**