

Scavenger or oil return pump, returns small leakage of oil from the cylinder head back to the pump unit. Internal float switch automatically turns pump on and off. External float switch, if included, shuts off pump if pit begins to fill with water. Pit flood warning alarm, semi-transparent tank and cylinder head drip ring are available options.

**Heavy-Duty Scavenger Pump**

**Models OSC/B, OSC/B-1/3**

Heavy-Duty Scavenger Pump equipped with 1/4 or 1/3 HP motor, backflow free volumetric pump with removable intake oil filter and external float switch. Unit designed for floor installation. Constructed of ribbed, reinforced high-density polyethylene 4.8-gallon capacity container with 16 gauge galvanized steel and Plexiglas cover. The clear 1/4" Plexiglas top allows visibility of the inner components of the unit. Plastic tubing 1/2" OD, 100 Ft. Model P02SP008 is included.

**Unit**

- Automatic oil discharge operation with internal oil float switch
- Pit flood control with manual reset, shuts off pump if pit water present
- Oil inlet: opening, 9/16" ID
- Oil discharge port: 1/2" MNPT brass compression for 1/2" OD tubing
- Container: ribbed, high-density blue polyethylene, 4.8 Gal. capacity
- Lid: clear 1/4" thick Plexiglas and 16 Ga. galvanized steel
- 100 Ft. plastic tubing 1/2"OD with fittings
- Power cord: 3x16 AWG with molded 3-prong plug, 8 Ft.

**Approvals**

- UL and CSA approved electrical components

**Motor**

- **Model OSC/B** 1/4 HP, 5.0 FLA, 115VAC, 1 PH, 50/60Hz,
- **Model OSC/B-1/3** 1/3 HP, 5.6 FLA, 115VAC, 1 PH, 50/60Hz,
- Life time lubricated motor bearings
- Thermal overload protection
- Continuous duty rated

**Pump**

- Backflow free volumetric pump with rotary vane and brass body
- Wear resistant carbon graphite pumping chamber and vanes
- Removable stainless steel intake filter 200 mesh, 74 micron
- By-pass pump valve prevents motor overload
- 100-150 Ft. vertical discharge distance

**Discharge, Model OSC/B, 1/4HP**

- 49 GPH / 20 PSI / 46.2' Head
- 39 GPH / 200 PSI / 462' Head
- Shown for SG=1 (water)

**Discharge Model OSC/B-1/3, 1/3HP**

- 111 GPH / 20 PSI / 46.2' Head
- 101 GPH / 200 PSI / 462' Head
- Shown for SG=1 (water)

**Additional options**

- Semi-transparent tank
- Pit flood warning alarm
- Cylinder head drip ring

**Dimensions**

- Container inside: 15".0L x 9.25"W x 8.0"H
- Container outside: 16.5"L x 10.7"W x 8.0"H
- Overall dimensions: 20.5"L x 11.0"W, 14.6"H

**Weight**

- Model OSC/B 20.7 Lb.
- Model OSC/B-1/3 23.7 Lb.

**Cylinder Head Flexible Drip Ring Kit, Accessory**

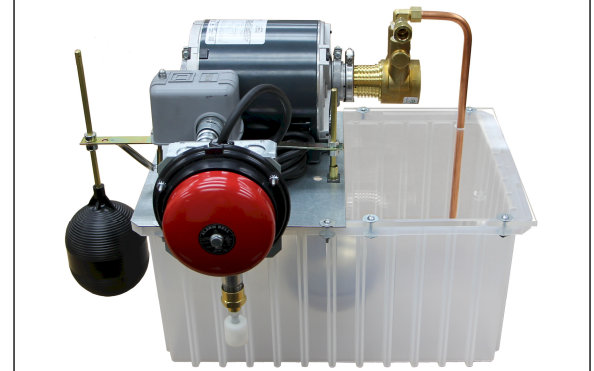
Contains leaking fluid from hydraulic elevator heads. An oversized rubber drip ring is cut and wrapped around the hydraulic cylinder. The inner flange of the drip ring is secured with adjustable metal clamp. Kit includes full instructions, drip ring, 1/2"ID x 5/8"OD x 30" drain tubing, fitting, clamp and adhesive sealant. See last page for cylinder clearances.

Model	Diameter A	Circumference	G	H	W
CDR-1	5.75" - 7"	18.1" - 22"	1"	1"	2.63"
CDR-2	7" - 8.5"	22" - 26.7"	1"	1"	2.69"
CDR-3	8.5" - 10"	26.7" - 31.4"	1"	1"	2.88"
CDR-4	10" - 12"	31.4" - 37.7"	1"	1"	3.44"
CDR-5	12" - 14.5"	37.5" - 45.6"	1"	1"	3.69"
CDR-IVO*	3.875"	12.2"	1.25"	1.5"	1.75"

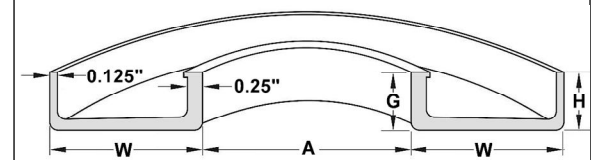
\*Designed for Dover Inverted cylinder head



Heavy-duty scavenger pump  
OSC/B, OSC/B-1/3



Heavy-duty scavenger pump  
Semi-transparent tank, pit flood warning alarm



Cylinder head flexible drip ring kit

## Cylinder Head Scavenger Pump

**Models SC/B-2, SC/B**  
**Models SC/B-2FR, SC/BFR**

Cylinder Head Scavenger Pumps equipped with 1/12 HP motor, removable intake filter and submersible pump with check valve. Unit primarily designed to mount to cylinder head with options for wall or floor installation. Available with, manual reset, pit flood control switch. Constructed of ribbed, reinforced high-density polyethylene 3.6-gallon capacity tank, with 16 gauge galvanized steel removable cover. Recommended plastic tubing 1/2" OD, 100 Ft. Model P02SP008 is not included.

### Unit

- Automatic oil discharge operation with internal oil float switch
- Removable stainless steel intake filter, 30 mesh, 590 micron
- Oil inlet port: 1/2" MNPT
- Oil discharge port: 1/2" MNPT compression brass for 1/2" OD tubing
- Container: ribbed, high-density blue polyethylene, 3.7 Gal. capacity
- Lid: 16 Ga. galvanized steel with 3/4" lip
- Power cord: 3x18 AWG with molded 3-prong plug, 8 Ft.

### Features

- Reinforced external mounting brackets to mount off cylinder head bolts
- External pit flood control switch with manual reset, shuts off pump if pit water present

Features / Models	SC/B-2	SC/B	SC/B-2FR	SC/BFR
Cylinder head mounting brackets	---	Included	---	Included
External pit flood control switch	---	---	Included	Included

### Approvals

- CSA approved electrical components

### Motor

- 1/12HP, 3.5A, 115VAC, 1 PH, 50/60Hz
- Thermal overload protection
- Life time lubricated motor bearings
- Oil-filled to maximize heat dissipation
- Epoxy coated cast aluminum housing and motor cover

### Pump

- Wear resistant nylon pumping chamber and vanes, Viton® shaft seal
- Brass check valve for vertical pumping
- 10-15 Ft. vertical discharge distance

### Discharge

- 250 GPH / 4.3 PSI / 10' Head
- 110 GPH / 8.7 PSI / 20' Head
- Shown for SG=1 (water)

### Dimensions

- Container inside: 15.0"L x 9.25"W x 6.0"H
- Container outside: 16.8"L x 11.5"W x 6.3"H

### Overall dimensions:

- Model SC/B-2 16.8"L x 11.5"W x 6.3H"
- Model SC/B 16.8"L x 16.5"W x 6.5H"
- Model SC/B-2FR 19.3"L x 11.5"W x 8.3H"
- Model SC/BFR 19.3"L x 16.5"W x 8.3H"

### Weight

- Model SC/B-2 13.9 Lb.
- Model SC/B 18.6 Lb.
- Model SC/B-2FR 15.7 Lb.
- Model SC/BFR 20.3 Lb.

## Scavenger Pump Accessories

### Flood control switch

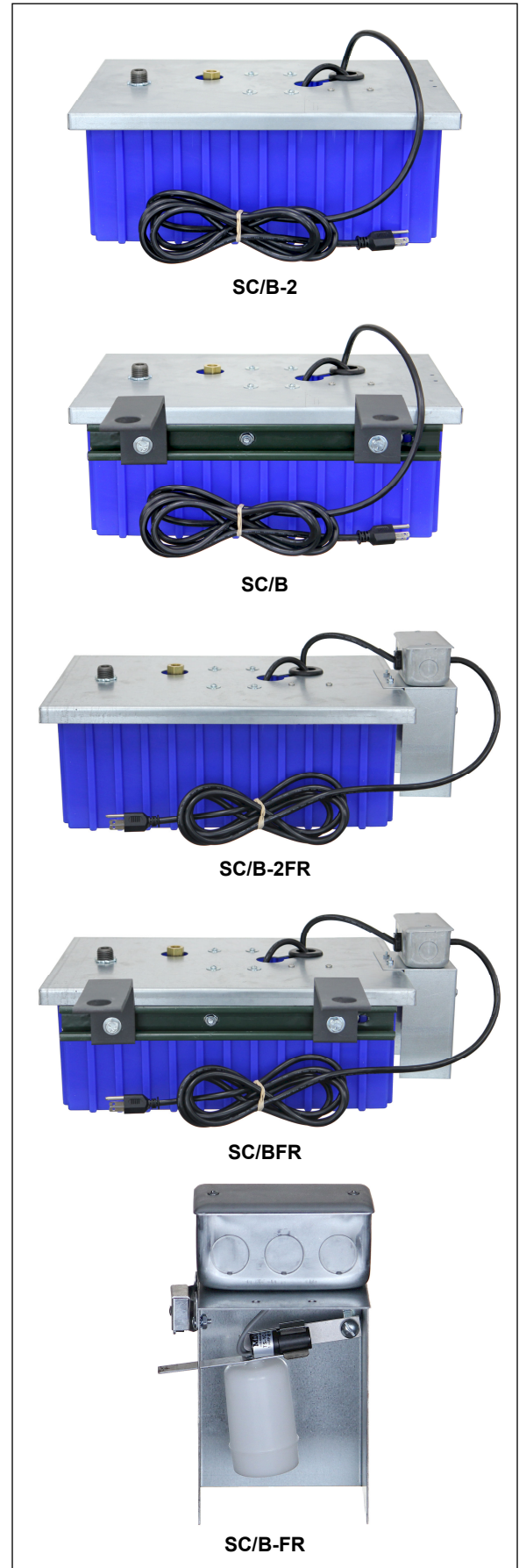
#### Model SC/B-FR

External pit flood control switch, with manual reset and 6" leads. Shuts off pump if pit begins to fill with water. It stays in OFF position until manually reset to position ON. Use with Models SC/B and SC/B-2 scavenger pumps.

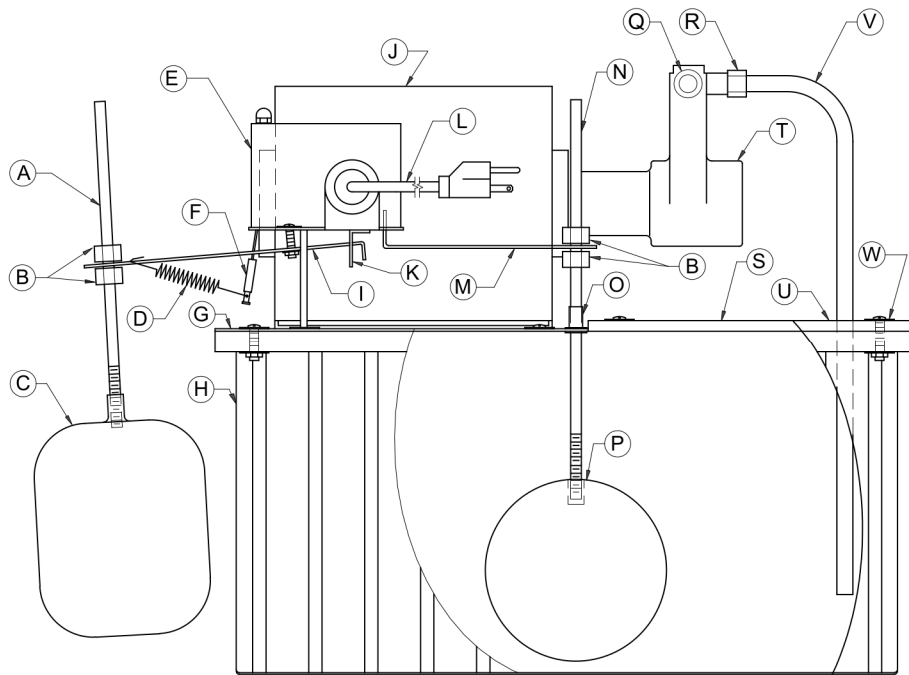
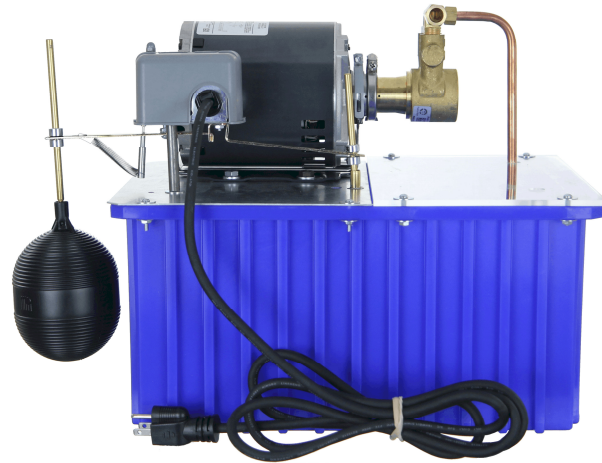
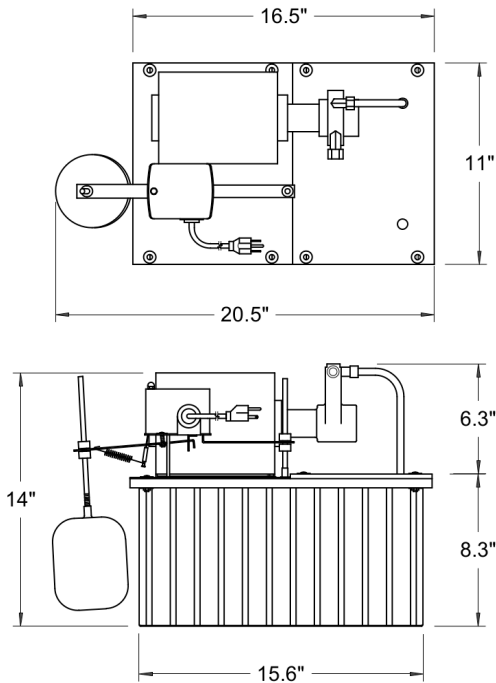
### Tubing

#### Model P02SP008

Oil intake/ discharge rigid semi-transparent plastic tubing, 3/8" ID, 1/2" OD, 100 Ft. roll. Includes two brass inserts for compression fittings connection.



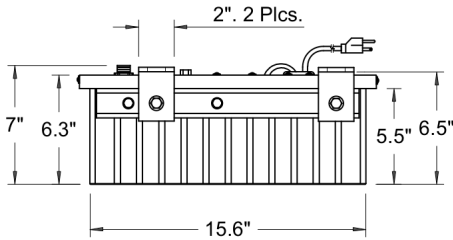
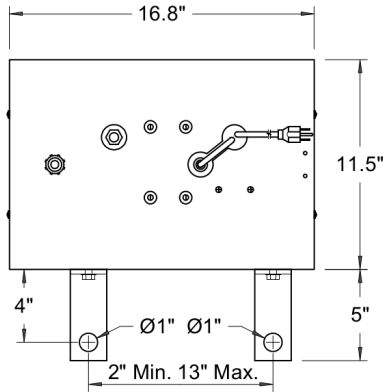
Scavenger Pump Models OSC/B, OSC/B-1/3



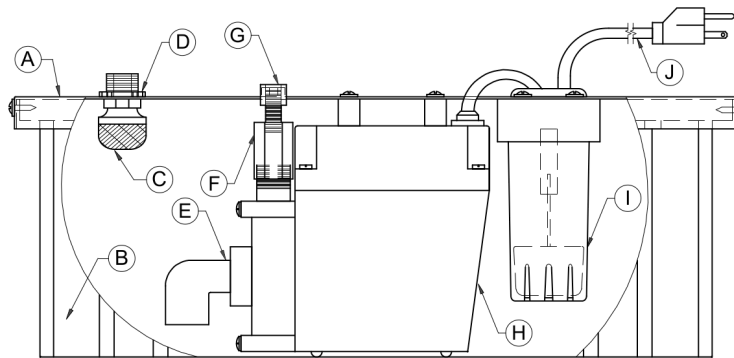
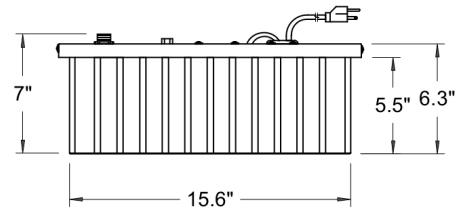
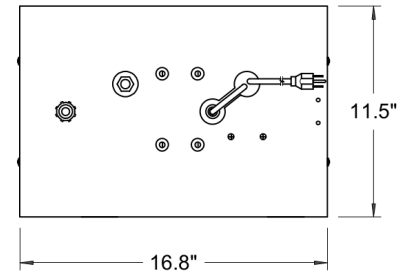
Part Model	Description	Part Model	Description
A	R02SP001 Flood control. Float rod, brass, 1/4" OD.	N	R02SP001 Pump float rod, brass, 1/4" OD.
B	C04SP001 Flood control. Shaft collar, 1/4" ID.	O	P02SP003 Pump float rod compression fitting, brass.
C	A02SP002 Flood control. Float, polyethylene.	P	P02SP007-N Pump float, stainless steel.
D	S07SP001 Flood control. Tension spring.	Q	P02SP012 Unit. Oil discharge port, compression fitting, brass, 1/2" OD.
E	21SP005 Flood and pump control. Switch assembly.	R	P02SP011 Compression fitting, brass, 3/8" ID.
F	P03SP001 Flood control. Activating pin.	S	31SP001B Unit cover, acrylic, 1/4".
G	31SP001A Unit. Cover, galvanized steel, 16 Ga.	T	21SP003 Pump with clamp, 45 GPH. Part of OSC/B.
H	11SP005 Unit. Container, high-density polyethylene, blue.	T	21SP010 Pump with clamp, 105 GPH. Part of OSC/B-1/3.
I	B03SP007 Flood control. Float pivot arm.	U	N/A Unit. Oil inlet opening, 9/16" OD.
J	21SP004 Motor assembly, 1/4HP, 115VAC. Part of OSC/B.	V	P02SP010 Tubing, copper, 3/8".
J	21SP011 Motor assembly, 1/3HP, 115VAC. Part of OSC/B-1/3.	W	51SP007 Cover hardware. Screw, slotted round head, 8-32 x 1".
K	B03SP006 Flood control. Pivot bracket w/ hardware.	W	N01SP003 Cover hardware. Kep nut, hex, 8-32.
L	21SP006 Power cord 3x16 AWG with molded 3-prong plug, 8 Ft.	W	W01SP003 Cover hardware. Washer, #8 x 11/16" OD x 1/32".
M	B03SP009 Pump control arm.		

Parts list for OSC/B and OSC/B-1/3 pumps, unless otherwise noted. Not shown: Plastic tubing Model P02SP008, 1/2" OD, 3/8" ID, two brass inserts, 100' roll.

Scavenger Pump Model SC/B



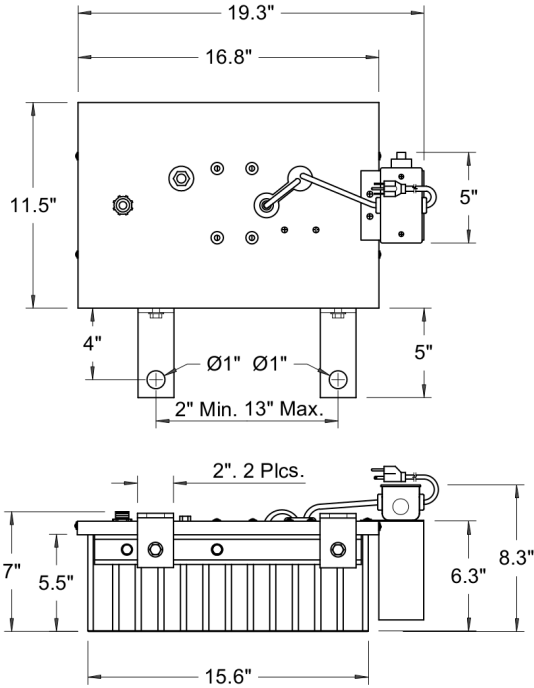
Scavenger Pump Model SC/B-2



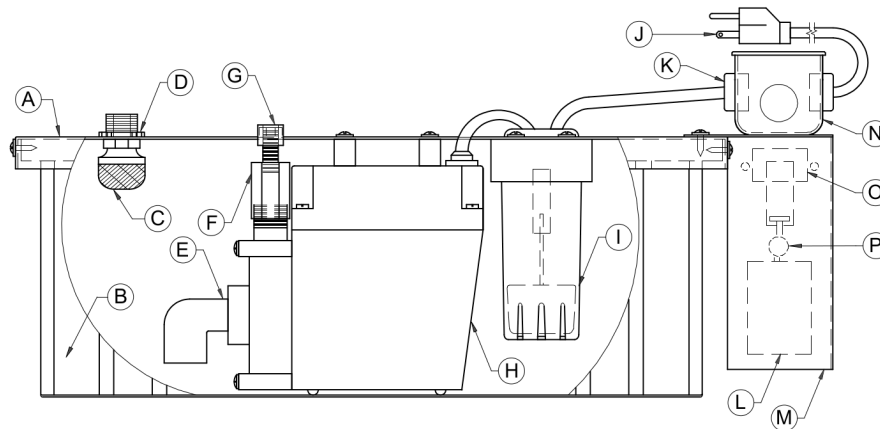
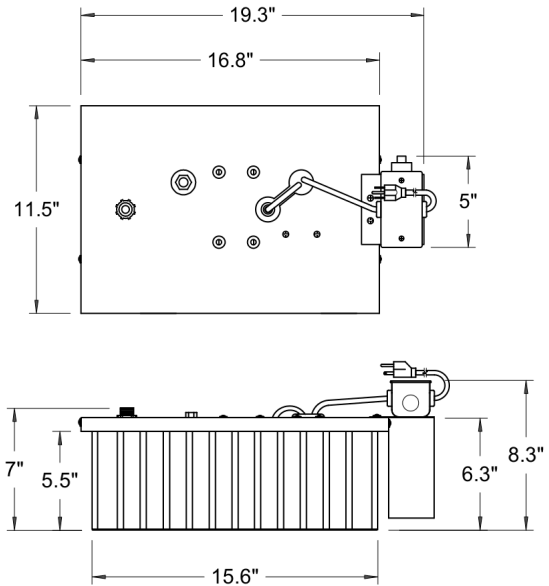
Part Model	Description	Part Model	Description
A	31SP003 Unit. Steel cover with 3/4" downward lip, galvanized, 16 Ga.	F	P02SP004 Unit. Oil discharge port, check valve.
B	11SP003 Unit. Container, high-density polyethylene, blue.	G	P02SP003 Unit. Oil discharge port, compression fitting, brass, 1/2" OD.
C	P02SP005 Unit. Oil inlet port, pump strainer, 1/2" NPT.	H	21SP001 Internal pump.
D	N01TH001 Unit. Oil inlet port, conduit locknut, 1/2".	I	21SP001 Internal pump float switch.
E	21SP001 Internal pump intake.	J	21SP001 Power cord 3x18 AWG, molded 3-prong plug, 8 Ft.

Not shown: Support unistrat bracket Model B03SP004, 1-5/8" x 13/16" x 15"; cylinder head angle brackets Model A01SP001, 5" x 3" x 2" x 1/4".

**Scavenger Pump Model SC/BFR**



**Scavenger Pump Model SC/B-2FR**



Part Model	Description	Part Model	Description
A	31SP003 Unit. Steel cover, 3/4" downward lip, galvanized, 16 Ga.	J	21SP001 Power cord 3x18 AWG with molded 3-prong plug, 8 Ft.
B	11SP003 Unit. Container, high-density polyethylene, blue.	K	H01SP001 Power cord strain relief bushing.
C	P02SP005 Unit. Oil inlet port. Pump strainer, 1/2" NPT.	L	A02SP001 Flood control. Float, polyethylene.
D	N01TH001 Unit. Oil inlet port. Locknut, 1/2" conduit.	M	SC/B-FR Flood control. Switch assembly. L, P, O, N.
E	21SP001 Internal pump intake.	N	11SP002 T-Box, electrical.
F	P02SP004 Unit. Oil discharge check valve.	O	M01SP004 Flood control. Magnetic catch.
G	P02SP003 Unit. Oil discharge port. Compression fitting, brass, 1/2" OD.	P	H01SP005 Flood control. Mercury switch holder.
H	21SP001 Internal pump.	P	21SP002 Flood control. Mercury switch.
I	21SP001 Internal pump float switch.		

Not shown: Support unistrat bracket Model B03SP004, 1-5/8" x 13/16" x 15"; cylinder head angle brackets Model A01SP001, 5" x 3" x 2" x 1/4".

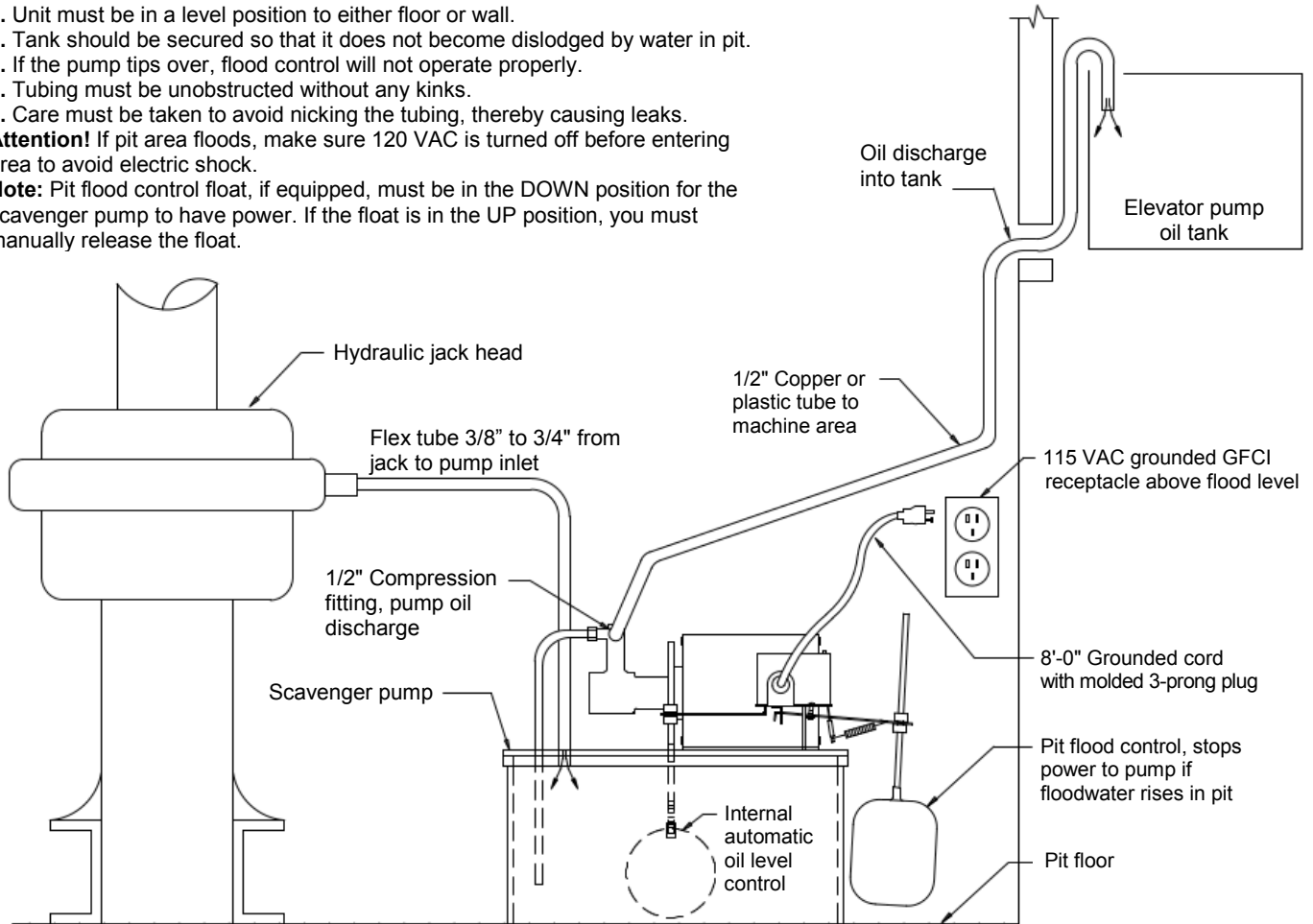
### Scavenger Pump Installation

(Model OSC/B shown)

1. Unit must be in a level position to either floor or wall.
2. Tank should be secured so that it does not become dislodged by water in pit.
3. If the pump tips over, flood control will not operate properly.
4. Tubing must be unobstructed without any kinks.
5. Care must be taken to avoid nicking the tubing, thereby causing leaks.

**Attention!** If pit area floods, make sure 120 VAC is turned off before entering area to avoid electric shock.

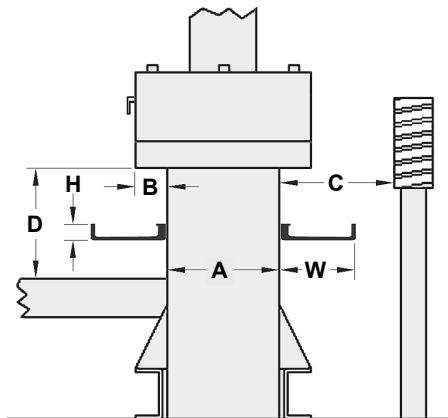
**Note:** Pit flood control float, if equipped, must be in the DOWN position for the scavenger pump to have power. If the float is in the UP position, you must manually release the float.



### Cylinder Head Drip Ring Installation

Determine your cylinder sizes and clearances below.

- A** - Diameter of the cylinder where the ring will be installed.
- B** - Overhang of the packing head from the cylinder.
- C** - Minimum side clearance is 4", or (W+0.25").
- D** - Minimum vertical clearance is 1.125", 1.625" for Dover Inverted head.
- G** - Drip ring inner wall height.
- H** - Drip ring outer wall height.
- W** - Overhang of the drip ring from the cylinder. **W** must be bigger than **B**.



**QUALITY**  
**ELEVATOR PRODUCTS, INC.**  
Cylinder size and head styles