

ELEVATOR SERVICE DOOR KEY KEEPERS

DOOR KEY KEEPERS

Key keepers have one common key. Only one key provides access to many keys from different areas, eliminating multiple keys confusion and deterring theft. All key keepers made from sturdy 16-gauge (1/16") steel and mount over door handle up to 1-3/16" diameter, or door edge up to 1-3/4" thick. We provide registered keying, preventing unauthorized entry. One key Included. Additional keys are available upon request.

DKK series

Over the door edge key keeper. Cadmium plated steel to prevent rust. Continuous piano hinge with none removable pin design. Box can hold keys and credit card size key cards. Box inside dimensions: 2"D x 3-1/8"H x 2-3/8"W.

DKK-ODCC series

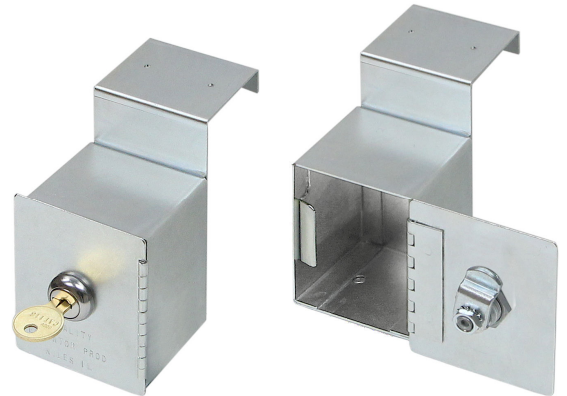
Over the door edge key keeper. Black powder coated steel. The credit card size key cards and keys housed in a removable steel tray with inside dimensions: 2-1/8"D x 1-1/2"H x 3-3/4"W.

DKK-OD series

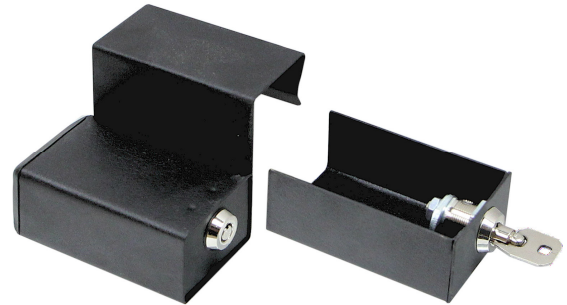
Over the door edge key keeper. Black powder coated finish. The keys housed in a removable steel tray with inside dimensions: 1-1/4"D x 1-1/8"H x 2-1/4"W.

DKK-KT series

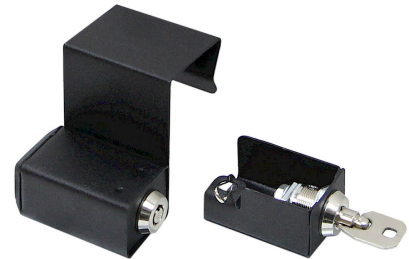
Around the handle key keeper. Black powder coated steel. The keys housed in removable steel tray with inside dimensions: 1-1/4"D x 1-1/8"H x 2-1/4"W.



DKK



DKK-ODCC







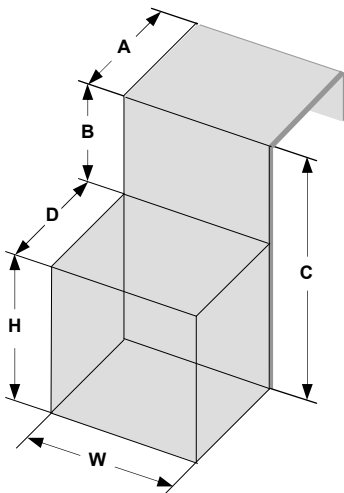
DKK-OD



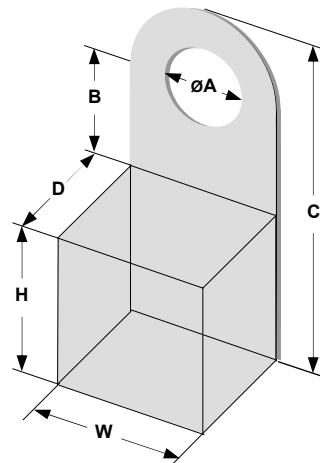
DKK-KT

KEY KEEPER DIMENSIONS and MOUNTS

| Series & Mounts | Inside dimensions | | | Outside dimensions | | | Holds |
|------------------------------|-------------------|--------|--------|--------------------|--------|--------|-------------------------------------------------------------------------------------|
| | D | H | W | A | B | C | |
| DKK Door edge | 2" | 3-1/8" | 2-3/8" | 1-7/8" | 1-1/8" | 4-3/8" |  |
| DKK-ODCC Door edge | 2-1/8" | 1-1/2" | 3-3/4" | 1-7/8" | 1-5/8" | 3-1/2" |  |
| DKK-OD Door edge | 1-1/4" | 1-1/8" | 2-1/4" | 1-7/8" | 1-3/4" | 3-1/8" |  |
| DKK-KT Door handle | 1-1/4" | 1-1/8" | 2-1/4" | 1-3/16" | 1-1/2" | 4-1/4" |  |



DKK, DKK-ODCC, DKK-OD



DKK-KT

QUALITY
ELEVATOR PRODUCTS, INC.